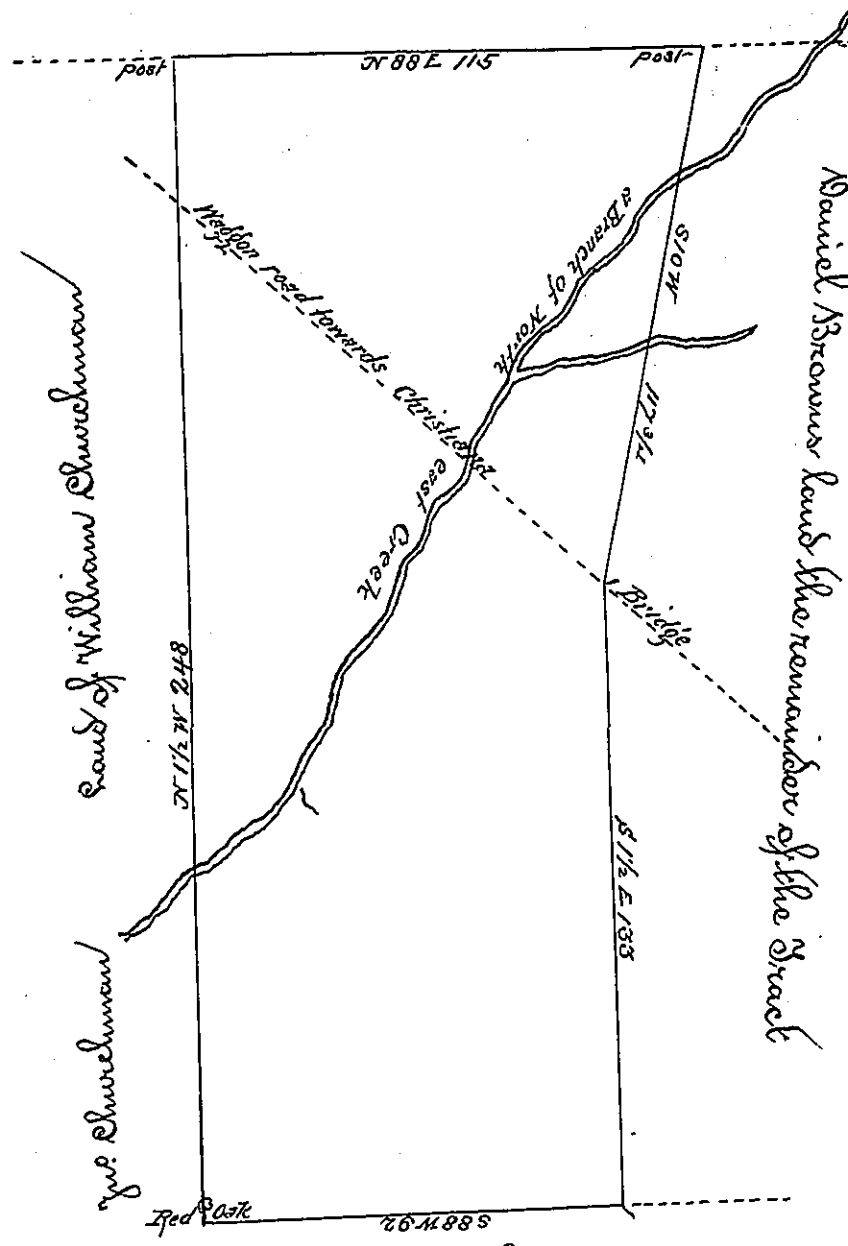


Land of George Slater late surveyed for Wm Beals



The above draft represents a tract of land situate in East Nottingham Township, Chester County containing ^{as} 142: 24: ^{3/4} & allowance of six per cent. Being part of a tract of 200* acres & allowance which was surveyed on the 12th of April 1716 to James Wright on his warrant dated the 19th of November 1715

August 25th 1809
 Andrew Porter Esq^r }
 Surveyor General }

* say 212^a

Ja Hindman 1809

IN TESTIMONY that the above is a copy of the original remaining on file in the Department of Internal Affairs of Pennsylvania, made conformably to an Act of Assembly approved the 16th day of February, 1833, I have hereunto set my Hand and caused the Seal of said Department to be affixed at Harrisburg, this

_____ day of July 1897
James W. Patton
 Secretary of Internal Affairs.